

FLEET & HEAVY-DUTY



FLEETRANNER® BELTS



The Best Belts For Your Fleet

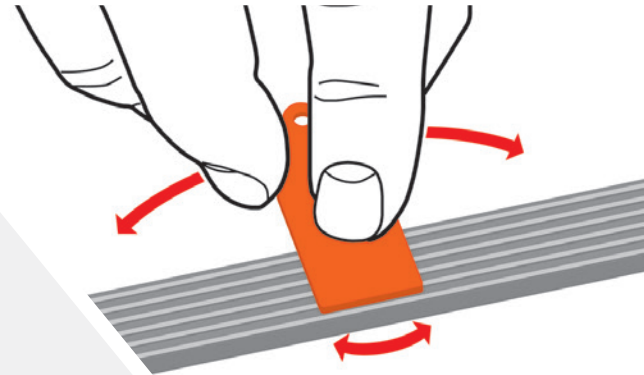
GO FURTHER WITH FLEETRANNER

Don't settle for the limited service life of other belts, which drive up maintenance costs and take your trucks off the road. With more than 40% better load and wear protection, FleetRunner Heavy-Duty belts last longer between services, saving your fleet money and downtime.

FLEETRANNER® BELTS

HOW TO INSPECT TODAY'S BELTS

Neoprene belts manufactured before the year 2000 show obvious failure signs such as cracks. Today's EPDM serpentine belts wear out gradually, much like a tire, and don't always show signs of visual wear. A serpentine belt can appear to be in good condition when it's actually near failure. The **Gates Belt Wear Gauge** provides a simple and reliable way to determine if a serpentine belt has lost enough material to negatively affect performance and warrant replacement.



FLEETRANNER HEAVY-DUTY BELTS

- › Last 34% longer than OE belts
- › Last 4X longer than other Aftermarket belts
- › Adhesion gum layer gives composite belt material superior durability
- › Superior resistance to the high heat conditions of modern diesel engines
- › Lowest cost per mile

BE SYSTEM SMART

At every scheduled preventive maintenance cycle, use the **Gates Belt Wear Gauge** to determine if a serpentine belt has lost enough material to negatively affect performance. As little as 5% belt rib wear can cause loss of tension, noise and heat in the system.

Replacing a belt? Don't forget about the tensioner & pulleys! All parts in a system are engineered to work in concert and wear at about the same rate. **Be System Smart** and complete a full repair by inspecting and replacing all components at the same time to ensure proper system function.