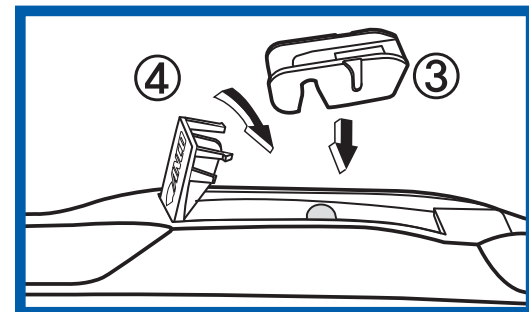
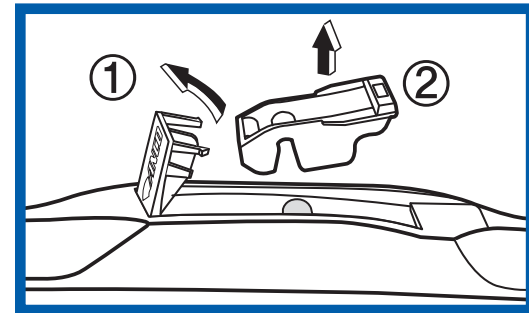
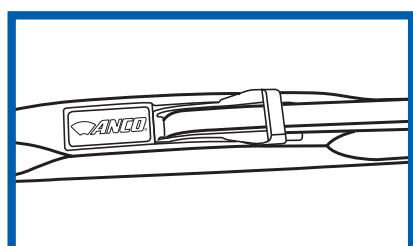
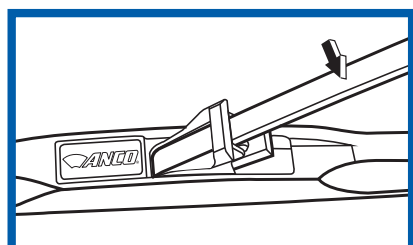
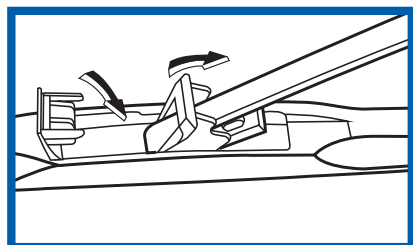
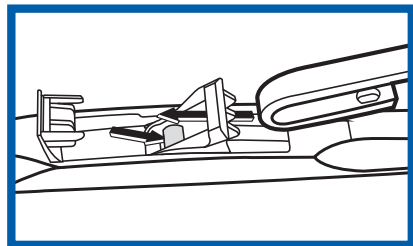
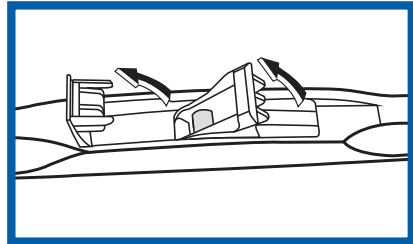
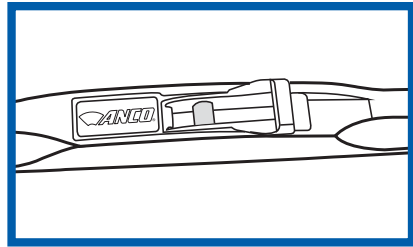


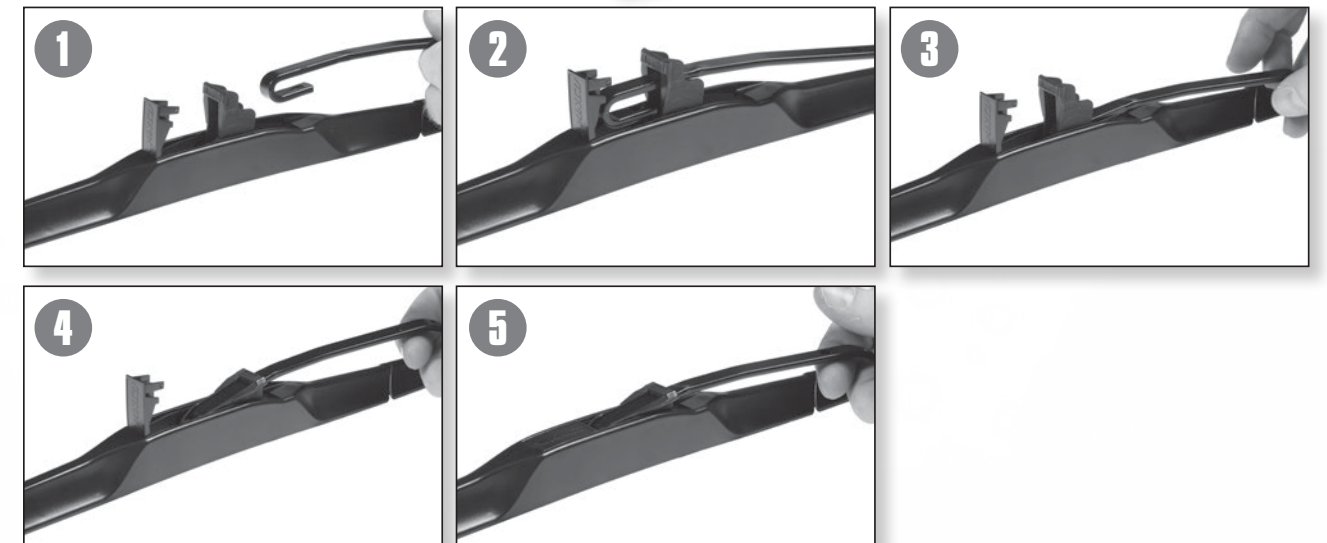
Additional connector included for applications that have a unique arm hook.



## Hybrid Blade Assembly and Connection



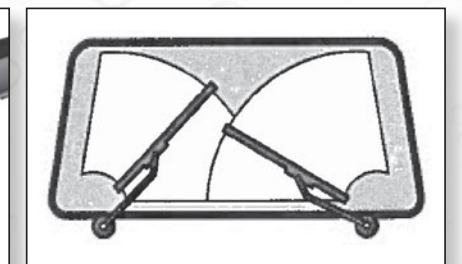
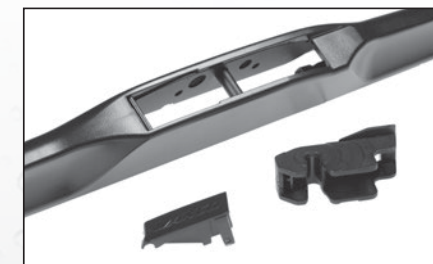
For Installations with a Standard Hook Connection...



Remove the adapters shown for the following circumstances:

For hook arm with plastic beauty cap on top...

For the passenger side of an opposed wiper system...



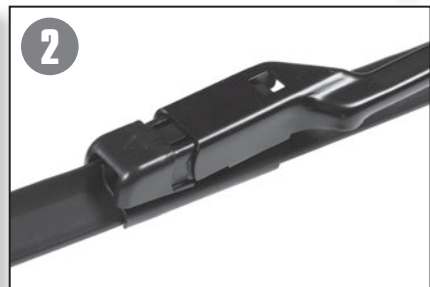
Correct

Incorrect

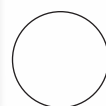
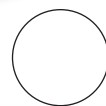
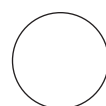
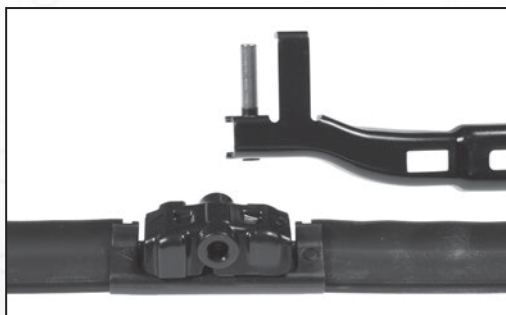


# Beam Blade Bayonet/Side Pin Assembly and Connection

For Installations with a Bayonet Connection...



For Installations with a Side Pin Connection...



# Beam Blade Pinch Tab/Top Lock Assembly and Connection

For Installations with a Pinch Tab Connection...

