

INSTALL/REMOVAL INSTRUCTIONS: BLEND DOOR

ATTENTION: Refer to the appropriate shop manual for your vehicle to obtain specific service procedures for this part. If you do not have a service manual or lack the skill to install this part, it is recommended that you seek the services of a qualified technician. Pay special attention to all cautions and warnings included in the shop manual. Read and follow all instructions carefully.

ATTENTION: Refer to the appropriate shop manual for your vehicle to obtain specific service procedures for this part. If you do not have a service manual or lack the skill to install this part, it is recommended that you seek the services of a qualified technician. Pay special attention to all cautions and warnings included in the shop manual. Read and follow all instructions carefully.

902-323

Dodge RAM 02-08 Mode Door

Installation Instructions

Packing list:

- Metal blend door
- Metal duct tape

Tools required:

- Screw driver, pliers
- Socket wrench set
- Dremel[®] tool(with flexible extension)
- Optional: shop vac, flashlight

1. Disconnect the negative terminal of the battery.
2. Remove the plastic covering over the glove box and lower portion of the center control panel.

Fig. 1

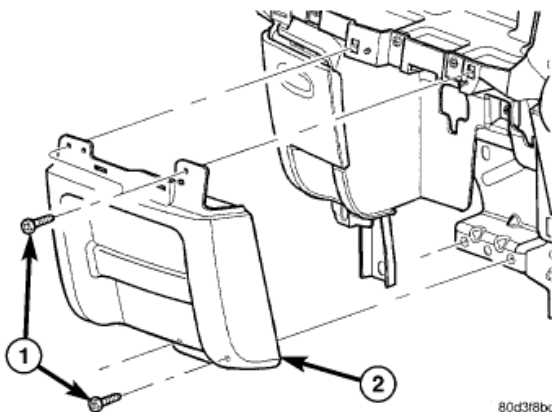
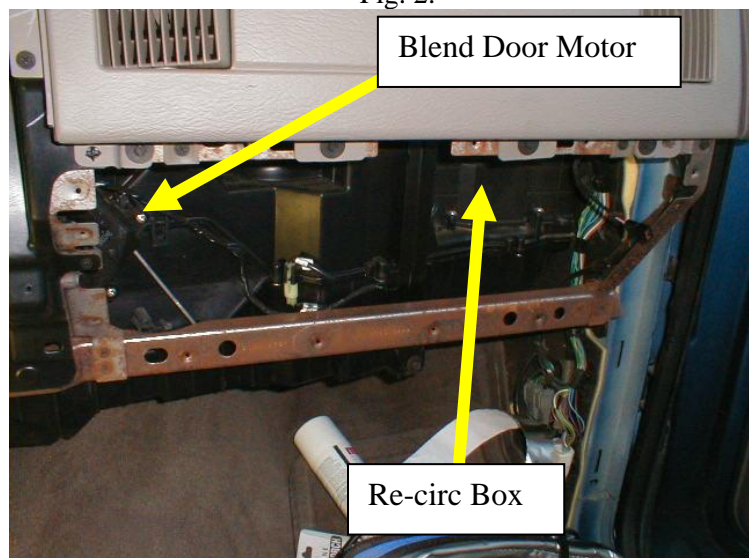


Fig. 21 STORAGE BIN

- 1 - SCREWS (4)
- 2 - STORAGE BIN

Fig. 2.



Disclaimer:

Even though every attempt is made to ensure this information is complete and accurate, it is impossible to account for all possible circumstances or situations. Please consult with a qualified auto technician before attempting to perform any work you are not qualified to do. Automobiles can be hazardous to work on; be sure to take all necessary safety precautions. Failure to do so may result in property damage or personal injury. Certain motor vehicle standards and performance requirements may apply to our motor vehicle (such as Federal Motor Vehicle Safety Standards by the National Highway Traffic Safety Administration). Be sure that your work is performed in accordance with such standards and that you do not disable any motor vehicle safety feature.

INSTALL/REMOVAL INSTRUCTIONS: BLEND DOOR

ATTENTION: Refer to the appropriate shop manual for your vehicle to obtain specific service procedures for this part. If you do not have a service manual or lack the skill to install this part, it is recommended that you seek the services of a qualified technician. Pay special attention to all cautions and warnings included in the shop manual. Read and follow all instructions carefully.

Fig. 3

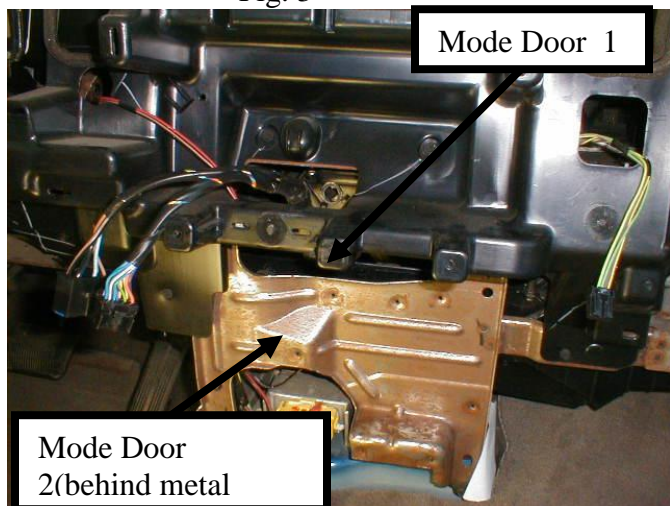


Fig 4b

Fig. 4a

3. The remainder of the instruction set will be divided into segments addressing each door assembly. Skip through sections that do not apply to your needs.

Mode Door 2

- 1. Mode Door 2 is hidden behind the metal bracing. The brace has to be unbolted and removed or cut with a rotary grinder. There is one bolt on the bottom and a spot weld to the passenger side cross brace. If you cut the metal, it would be best to re-enforce it with metal bars and screws when you re-assemble it. Fig 12 shows how to drill/cut/bend to pull back the metal brace. We do not recommend this process and advise that you should evaluate any impact that you feel the cuts will have on the structural integrity of your truck. You can always remove the entire dash and plenum box to get to the door.**

Disclaimer:

Even though every attempt is made to ensure this information is complete and accurate, it is impossible to account for all possible circumstances or situations. Please consult with a qualified auto technician before attempting to perform any work you are not qualified to do. Automobiles can be hazardous to work on; be sure to take all necessary safety precautions. Failure to do so may result in property damage or personal injury. Certain motor vehicle standards and performance requirements may apply to our motor vehicle (such as Federal Motor Vehicle Safety Standards by the National Highway Traffic Safety Administration). Be sure that your work is performed in accordance with such standards and that you do not disable any motor vehicle safety feature.

INSTALL/REMOVAL INSTRUCTIONS: BLEND DOOR

ATTENTION: Refer to the appropriate shop manual for your vehicle to obtain specific service procedures for this part. If you do not have a service manual or lack the skill to install this part, it is recommended that you seek the services of a qualified technician. Pay special attention to all cautions and warnings included in the shop manual. Read and follow all instructions carefully.

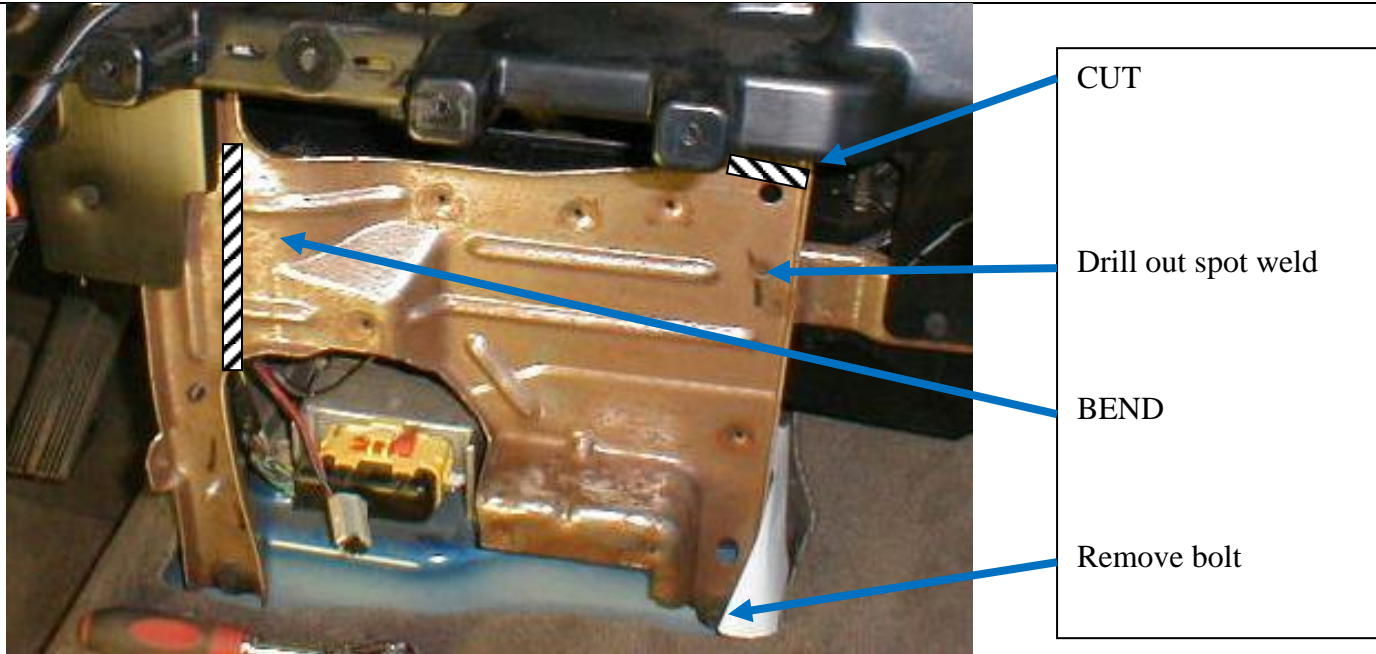


Fig 12

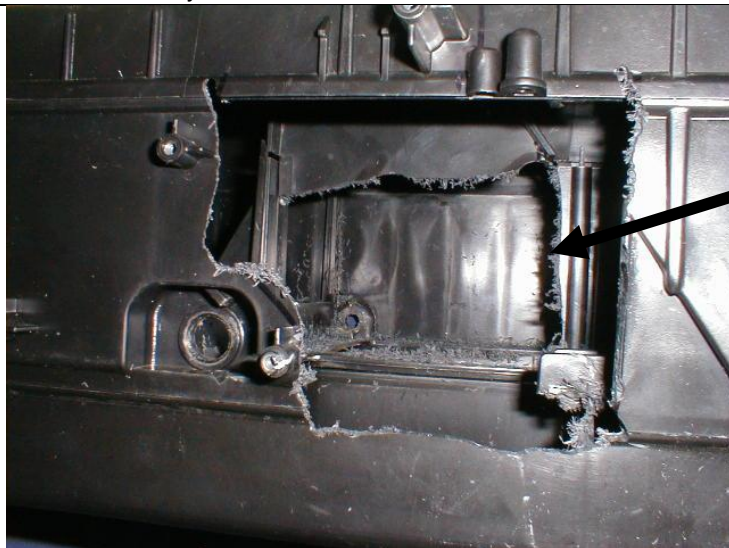
2. **Remove the actuator motor and examine the axle and limit pin. You can also manually move the door to check for correct operation.**
3. **Fig. 10 shows the cut pattern and fig.13 shows the center cut. Remove the old doors.**

Disclaimer:

Even though every attempt is made to ensure this information is complete and accurate, it is impossible to account for all possible circumstances or situations. Please consult with a qualified auto technician before attempting to perform any work you are not qualified to do. Automobiles can be hazardous to work on; be sure to take all necessary safety precautions. Failure to do so may result in property damage or personal injury. Certain motor vehicle standards and performance requirements may apply to our motor vehicle (such as Federal Motor Vehicle Safety Standards by the National Highway Traffic Safety Administration). Be sure that your work is performed in accordance with such standards and that you do not disable any motor vehicle safety feature.

INSTALL/REMOVAL INSTRUCTIONS: BLEND DOOR

ATTENTION: Refer to the appropriate shop manual for your vehicle to obtain specific service procedures for this part. If you do not have a service manual or lack the skill to install this part, it is recommended that you seek the services of a qualified technician. Pay special attention to all cautions and warnings included in the shop manual. Read and follow all instructions carefully.



Center divider cut for
Mode Door 2.

Fig. 13

4. **Place the new door into the box and insert the axle from the outside of the box with the limit pin between the constraints molded into the box. There is a plastic spacer on the end of the axle that has to be installed on the end of the pin when you insert the door. The cutout half faces down when the axle is installed. It is taped in the correct position when the door is shipped.**
5. **Replace the motor and seal the cuts in the box.**

Disclaimer:

Even though every attempt is made to ensure this information is complete and accurate, it is impossible to account for all possible circumstances or situations. Please consult with a qualified auto technician before attempting to perform any work you are not qualified to do. Automobiles can be hazardous to work on; be sure to take all necessary safety precautions. Failure to do so may result in property damage or personal injury. Certain motor vehicle standards and performance requirements may apply to our motor vehicle (such as Federal Motor Vehicle Safety Standards by the National Highway Traffic Safety Administration). Be sure that your work is performed in accordance with such standards and that you do not disable any motor vehicle safety feature.