

INSTALL/REMOVAL INSTRUCTIONS: WINDOW REGULATOR

ATTENTION: Refer to the appropriate shop manual for your vehicle to obtain specific service procedures for this part. If you do not have a service manual or lack the skill to install this part, it is recommended that you seek the services of a qualified technician. Pay special attention to all cautions and warnings included in the shop manual. Read and follow all instructions carefully.

REMOVAL/INSTALL OF WINDOW REGULATOR (740-666) Lincoln Town Car 1990-94

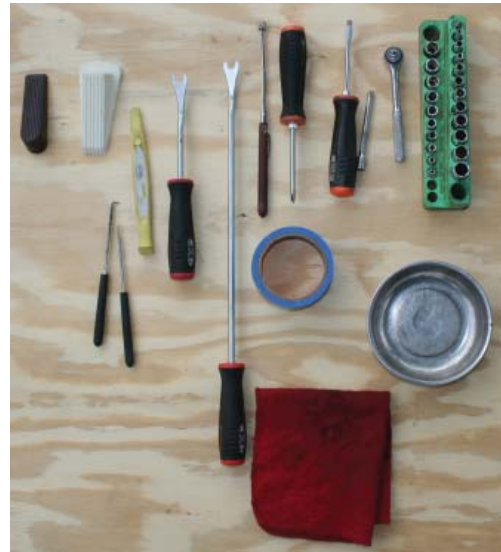
General Tech Tips:

- Use painter's tape rather than duct tape to secure window. It will not damage paint or leave sticky residue.
- A plastic pry tool is useful. It will not easily damage delicate trim like a screwdriver or metal pry bar.
- The replacement regulator should have a liberal amount of grease on slide area. If there is not much grease present, white lithium grease works well to lubricate the slide area.
- Aftermarket window tinting can cause the window to travel slower and put additional strain on the window regulator assembly.
- Window run channels should be cleaned and lubricated before installation of a new window regulator assembly. Silicone spray works well.

Tools required for removal and installation of window regulator and motor assembly:

- **Silicone spray lubricant**
- **Trim panel removal tool**
- **Pick**
- **Saddle cup assembly, tape, or wedge to hold window in place**
- **Flat-blade screwdriver or plastic pry tool**
- **10mm socket or driver**
- **Phillips screwdriver**
- **Grease pencil or marker**
- **10mm deep well socket**
- **Drill bit kit, 3/8" power drill**
- **Body fasteners (Dorman pn# 702-013)**

PLEASE WEAR SAFETY GLASSES!



INSTALL/REMOVAL INSTRUCTIONS: WINDOW REGULATOR

ATTENTION: Refer to the appropriate shop manual for your vehicle to obtain specific service procedures for this part. If you do not have a service manual or lack the skill to install this part, it is recommended that you seek the services of a qualified technician. Pay special attention to all cautions and warnings included in the shop manual. Read and follow all instructions carefully.

Removal Instructions

STEP 1: Using a Phillips head screwdriver, remove the interior door trim panel retaining screw.



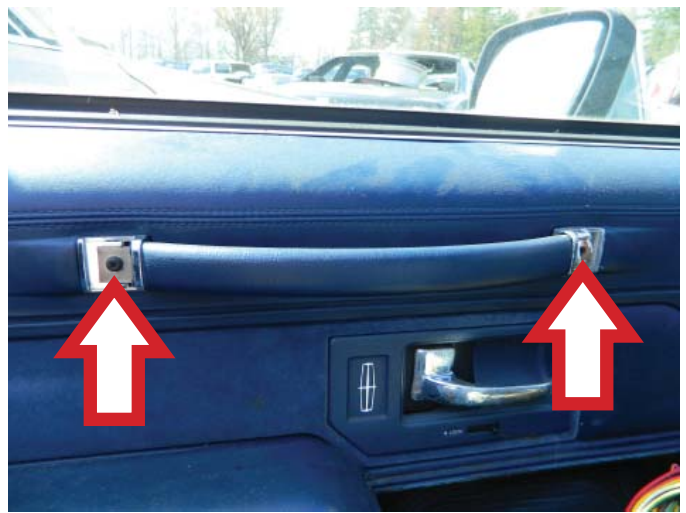
INSTALL/REMOVAL INSTRUCTIONS: WINDOW REGULATOR

ATTENTION: Refer to the appropriate shop manual for your vehicle to obtain specific service procedures for this part. If you do not have a service manual or lack the skill to install this part, it is recommended that you seek the services of a qualified technician. Pay special attention to all cautions and warnings included in the shop manual. Read and follow all instructions carefully.

STEP 2: Using a pick or small flat-blade screwdriver, remove the interior door pull retaining screw covers.



STEP 3: Using a Phillips head screwdriver, remove the interior door pull retaining screws.



STEP 4: Using a trim panel removal tool, remove the master door switch assembly.



INSTALL/REMOVAL INSTRUCTIONS: WINDOW REGULATOR

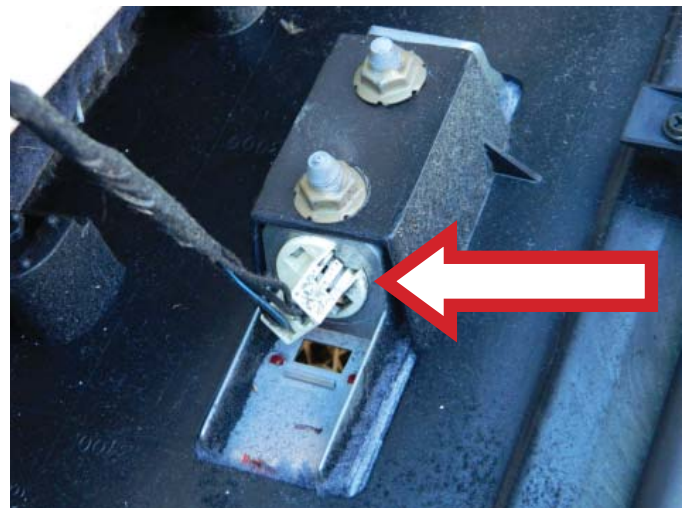
ATTENTION: Refer to the appropriate shop manual for your vehicle to obtain specific service procedures for this part. If you do not have a service manual or lack the skill to install this part, it is recommended that you seek the services of a qualified technician. Pay special attention to all cautions and warnings included in the shop manual. Read and follow all instructions carefully.

STEP 5: Using a trim panel removal tool, detach the interior door trim panel from the door. **NOTE:** THERE ARE INTERIOR DOOR TRIM PANEL RETAINERS EVERY 10–12 INCHES. WHEN REMOVING THE INTERIOR DOOR TRIM PANEL, IT WILL BE NECESSARY TO PUSH THE POWER SWITCH ASSEMBLY THROUGH THE SWITCH OPENING IN THE INTERIOR DOOR TRIM PANEL.



STEP 6: Remove the interior door trim panel from the door. **NOTE:** USE CAUTION WHEN REMOVING THE INTERIOR DOOR TRIM PANEL. THE COURTESY LAMP WILL STILL BE ATTACHED.

STEP 7: Disconnect the courtesy lamp socket.



INSTALL/REMOVAL INSTRUCTIONS: WINDOW REGULATOR

ATTENTION: Refer to the appropriate shop manual for your vehicle to obtain specific service procedures for this part. If you do not have a service manual or lack the skill to install this part, it is recommended that you seek the services of a qualified technician. Pay special attention to all cautions and warnings included in the shop manual. Read and follow all instructions carefully.

STEP 8: Remove the interior door trim panel.

STEP 9: Remove the water vapor barrier.

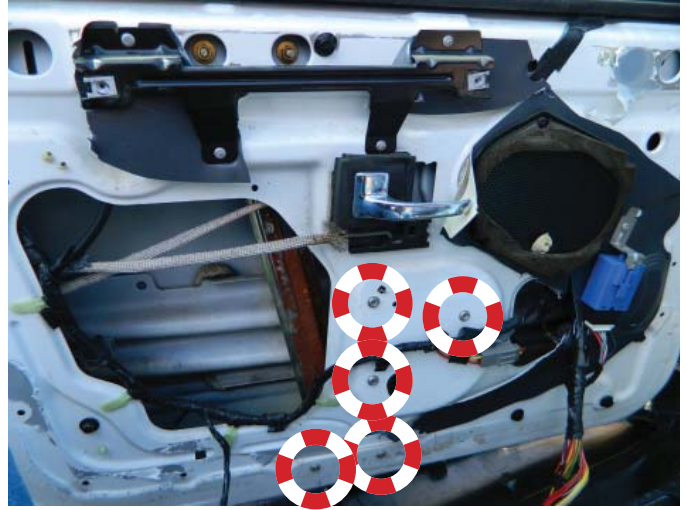


STEP 10: Using your 3/8" drill and an 1/8" drill bit, drill out the centers of the rivets attaching the window regulator to the door glass. Once you have used a 1/8" drill bit, gradually go up in size to a 1/4" drill bit. It may be necessary to raise or lower the regulator to access the door glass mounts. Once the door glass has been disconnected, manually slide the door glass into the closed position and hold in place with either a saddle cup assembly, painters tape, or a wedge. **CAUTION:** PAY SPECIAL ATTENTION TO THE DRILL BIT LOCATION. FAILURE TO DO SO WILL RESULT IN GLASS BREAKAGE. USE EXTREME CAUTION WHILE REMOVING THE RIVETS ATTACHING THE DOOR GLASS TO THE WINDOW REGULATOR.

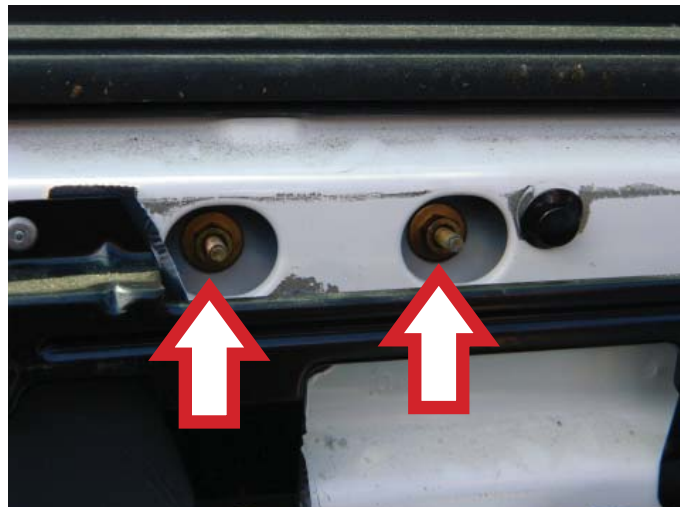
INSTALL/REMOVAL INSTRUCTIONS: WINDOW REGULATOR

ATTENTION: Refer to the appropriate shop manual for your vehicle to obtain specific service procedures for this part. If you do not have a service manual or lack the skill to install this part, it is recommended that you seek the services of a qualified technician. Pay special attention to all cautions and warnings included in the shop manual. Read and follow all instructions carefully.

STEP 11: Using your 3/8" drill and an 1/8" drill bit, drill out the centers of the window regulator attaching rivets. Once you have used an 1/8" drill bit gradually go up in size to a 1/4" drill bit. **CAUTION:** DO NOT DRILL ALL THE WAY THROUGH THE RIVET. YOU ARE ONLY REMOVING THE HEAD OF THE RIVET. FAILURE TO DO THIS WILL RESULT IN DAMAGE TO THE DOOR.



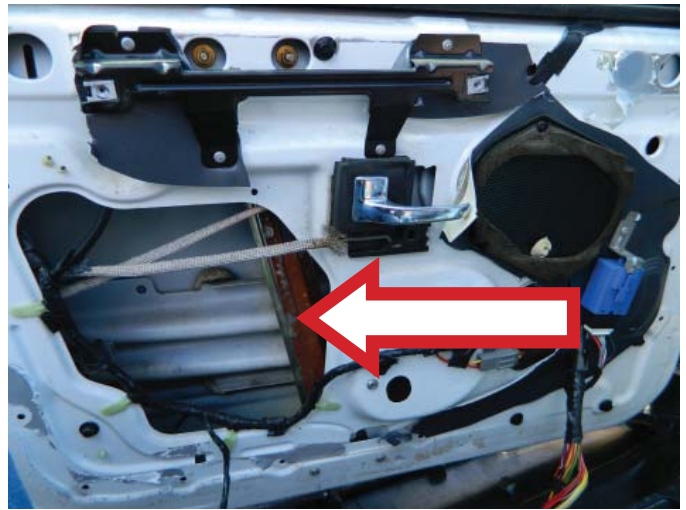
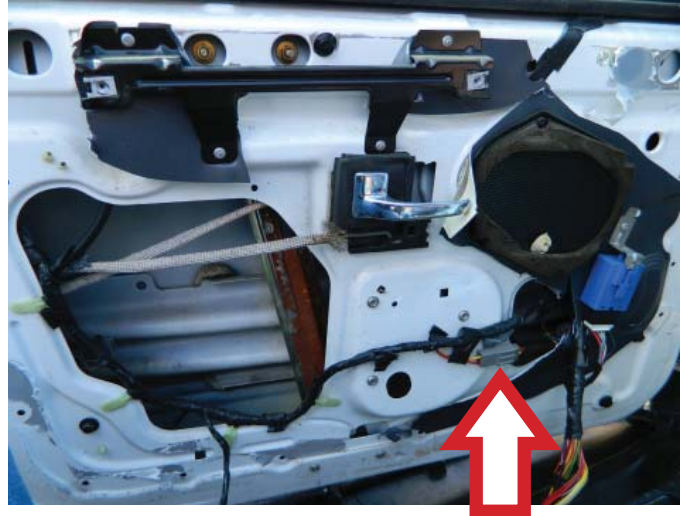
STEP 12: Remove the two (2) window regulator attaching nuts.



INSTALL/REMOVAL INSTRUCTIONS: WINDOW REGULATOR

ATTENTION: Refer to the appropriate shop manual for your vehicle to obtain specific service procedures for this part. If you do not have a service manual or lack the skill to install this part, it is recommended that you seek the services of a qualified technician. Pay special attention to all cautions and warnings included in the shop manual. Read and follow all instructions carefully.

STEP 13: Disconnect the window lift motor and remove the window regulator assembly through the main access opening on the door.



STEP 14: Remove the three (3) window lift motor attaching bolts.

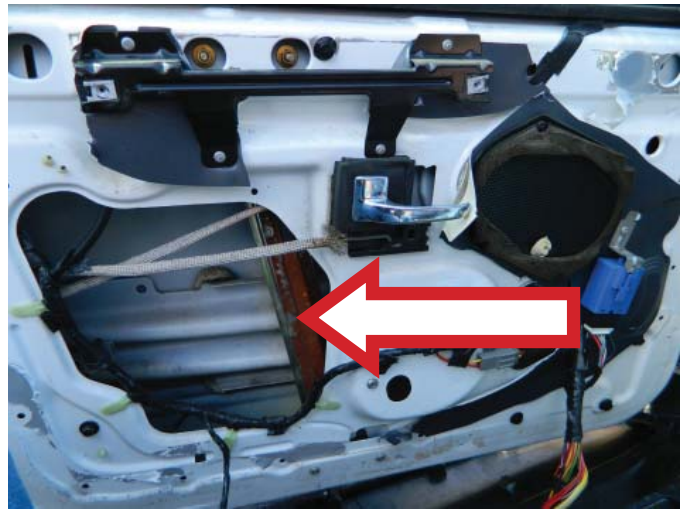
INSTALL/REMOVAL INSTRUCTIONS: WINDOW REGULATOR

ATTENTION: Refer to the appropriate shop manual for your vehicle to obtain specific service procedures for this part. If you do not have a service manual or lack the skill to install this part, it is recommended that you seek the services of a qualified technician. Pay special attention to all cautions and warnings included in the shop manual. Read and follow all instructions carefully.

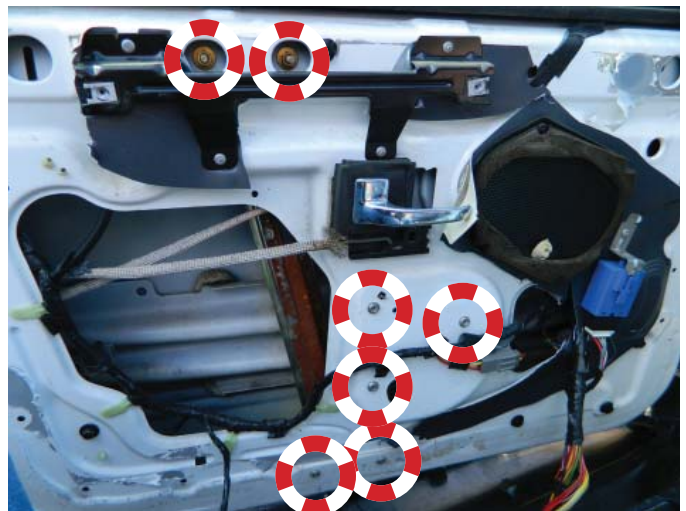
Installation Instructions

STEP 1: Attach the three (3) window lift motor attaching screws.

STEP 1a: Place the window regulator assembly through the main access opening in the door.



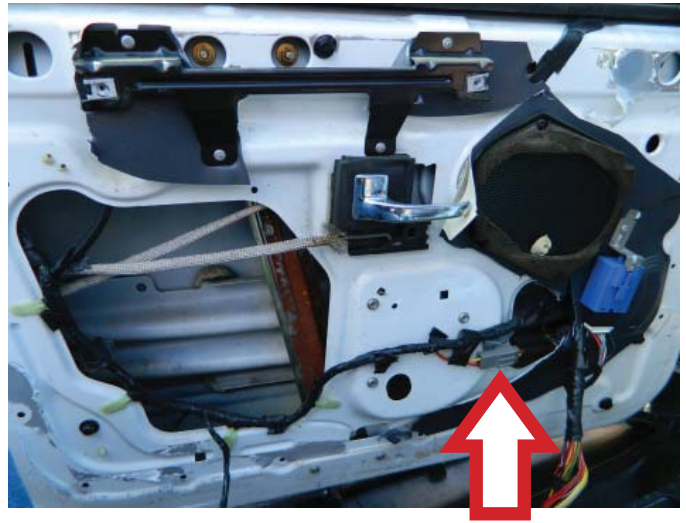
STEP 2: Using Dorman installation kit 702-013, attach the window regulator assembly to the door. **NOTE:** The Dorman installation kit 702-013 is comprised of 1/4" X 1" bolts, 1/4" nuts, and 1/4" washers.



INSTALL/REMOVAL INSTRUCTIONS: WINDOW REGULATOR

ATTENTION: Refer to the appropriate shop manual for your vehicle to obtain specific service procedures for this part. If you do not have a service manual or lack the skill to install this part, it is recommended that you seek the services of a qualified technician. Pay special attention to all cautions and warnings included in the shop manual. Read and follow all instructions carefully.

STEP 3: Connect the window lift motor.

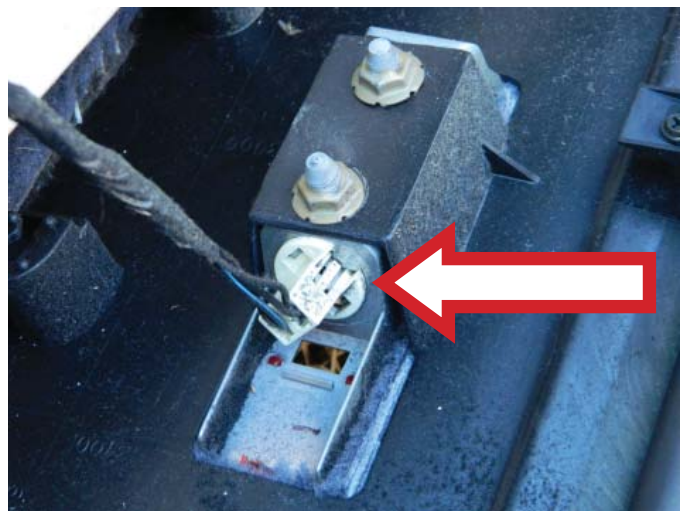


STEP 4: Manually slide the door glass to align the door glass mounts with the attaching points on the window regulator. **NOTE:** Dorman hardware kit 702-013 has the proper bolts to use in place of the original rivets that attached the door glass to the window regulator.

STEP 5: Operate the window regulator, verifying that the door glass and the window regulator are operating properly.

STEP 6: Connect the courtesy lamp.

STEP 6a: Place the power switch assembly through the switch assembly opening in the interior door trim panel.

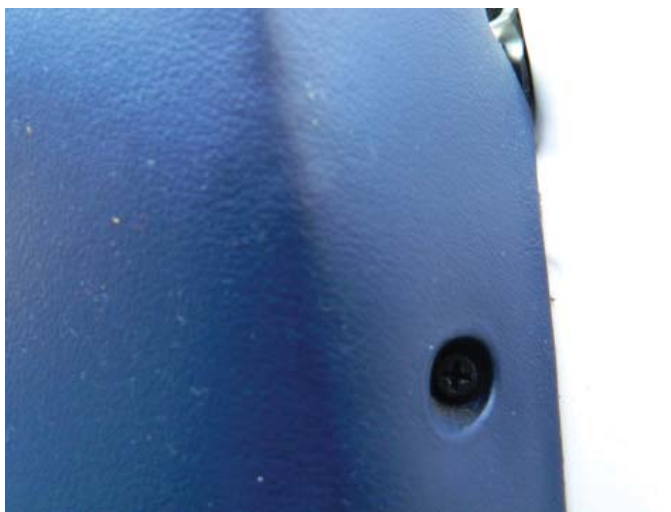


STEP 7: Attach the interior door trim panel to the door. Slide the interior door trim panel onto the door and align the interior door trim panel retainers with their corresponding holes. Push the interior door trim panel into position.

INSTALL/REMOVAL INSTRUCTIONS: WINDOW REGULATOR

ATTENTION: Refer to the appropriate shop manual for your vehicle to obtain specific service procedures for this part. If you do not have a service manual or lack the skill to install this part, it is recommended that you seek the services of a qualified technician. Pay special attention to all cautions and warnings included in the shop manual. Read and follow all instructions carefully.

STEP 8: Using a Phillips head screwdriver, attach the interior door trim panel retaining screws.



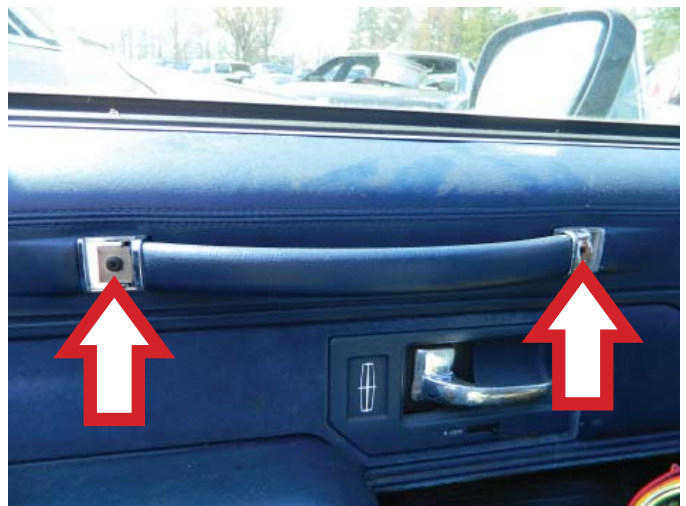
INSTALL/REMOVAL INSTRUCTIONS: WINDOW REGULATOR

ATTENTION: Refer to the appropriate shop manual for your vehicle to obtain specific service procedures for this part. If you do not have a service manual or lack the skill to install this part, it is recommended that you seek the services of a qualified technician. Pay special attention to all cautions and warnings included in the shop manual. Read and follow all instructions carefully.

STEP 9: Attach the power switch assembly onto the interior door trim panel.



STEP 10: Attach the interior door pull attaching screws.



INSTALL/REMOVAL INSTRUCTIONS: WINDOW REGULATOR

ATTENTION: Refer to the appropriate shop manual for your vehicle to obtain specific service procedures for this part. If you do not have a service manual or lack the skill to install this part, it is recommended that you seek the services of a qualified technician. Pay special attention to all cautions and warnings included in the shop manual. Read and follow all instructions carefully.

STEP 11: Attach the interior door pull attaching screw covers.



STEP 12: Verify that the window regulator assembly is operating properly and that all of the interior door trim panel retaining screws are tight.